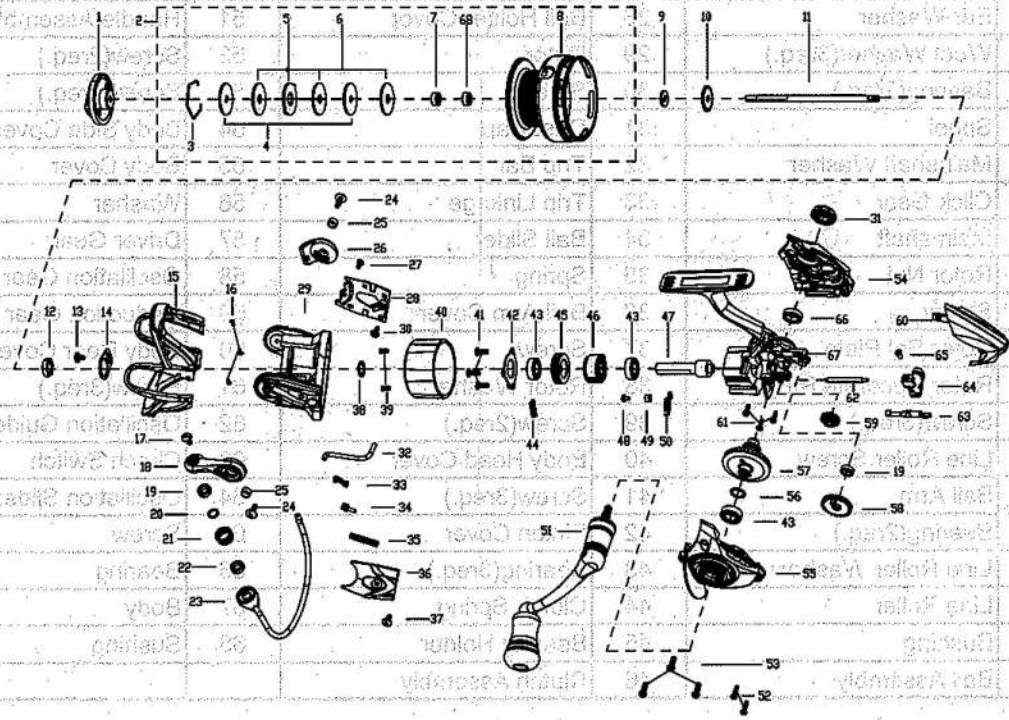




GENESYS 2000

EXPLODED VIEW



PARTS LIST OF GENESYS 2000

ITEM#	PARTS DESCRIPTION	ITEM#	PARTS DESCRIPTION	ITEM#	PARTS DESCRIPTION
1	Drag Knob Assembly	24	Bail Arm Screw(2req.)	47	Pinion
2	Spool Assembly	25	Bushing(2req.)	48	Screw
3	Washer Retaining Clip	26	Bail Holder	49	POM Bushing
4	Keyed Washer(2req.)	27	Screw	50	Clutch Switch Spring
5	Ear Washer	28	Bail Holder Cover	51	Handle Assembly
6	Wool Washer(3req.)	29	Rotor	52	Screw(2req.)
7	Bearing(2req.)	30	Screw	53	Screw(3req.)
8	Spool	31	Dust Cap	54	Body Side Cover
9	Mainshaft Washer	32	Trip Bar	55	Body Cover
10	Click Gear	33	Trip Linkage	56	Washer
11	Main shaft	34	Bail Slider	57	Driver Gear
12	Rotor Nut	35	Spring	58	Oscillation Gear
13	Screw	36	Bail Arm Cover	59	Reduction Gear
14	Rotor Set Plate	37	Screw	60	Body Rear Cover
15	Rotor Decorate Ring	38	Rotor Washer	61	Screw(3req.)
16	Screw(3req.)	39	Screw(2req.)	62	Oscillation Guide
17	Line Roller Screw	40	Body Head Cover	63	Clutch Switch
18	Bail Arm	41	Screw(3req.)	64	Oscillation Slider
19	Bearing(2req.)	42	Pinion Cover	65	Screw
20	Line Roller Washer	43	Bearing(3req.)	66	Bearing
21	Line Roller	44	Clutch Spring	67	Body
22	Bushing	45	Bearing Holder	68	Bushing
23	Bail Assembly	46	Clutch Assembly		

Ball Bearing 9+1 Gear Ratio 5.8:1

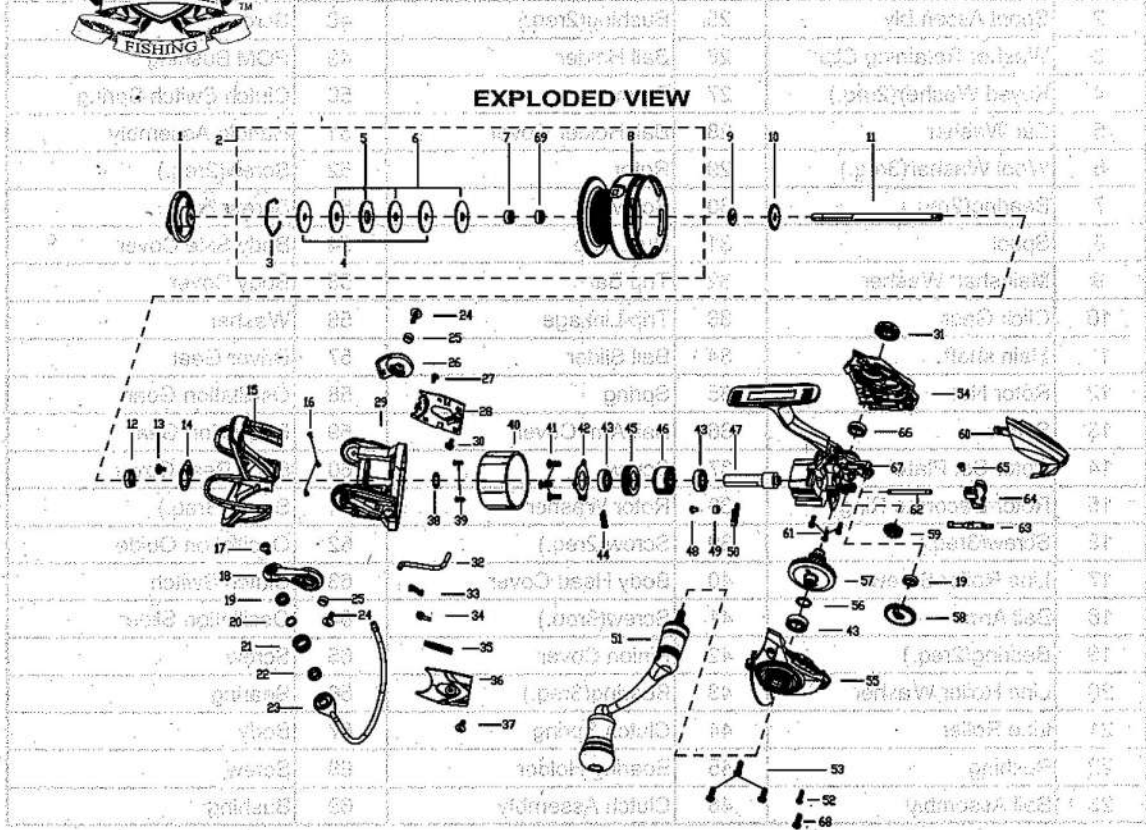
Line Capacity (mm-m/lbs-yds) 0.15-446 0.25-160 / 6-207 8-175

Reel Wt (g) 270

Max Drag (kg) 7



GENESYS 3000



PARTS LIST OF GENESYS 3000

ITEM#	PARTS DESCRIPTION	ITEM#	PARTS DESCRIPTION	ITEM#	PARTS DESCRIPTION
1	Drag Knob Assembly	24	Bail Arm Screw(2req.)	47	Pinion
2	Spool Assembly	25	Bushing(2req.)	48	Screw
3	Washer Retaining Clip	26	Bail Holder	49	POM Bushing
4	Keyed Washer(2req.)	27	Screw	50	Clutch Switch Spring
5	Ear Washer	28	Bail Holder Cover	51	Handle Assembly
6	Wool Washer(3req.)	29	Rotor	52	Screw(2req.)
7	Bearing(2req.)	30	Screw	53	Screw(3req.)
8	Spool	31	Dust Cap	54	Body Side Cover
9	Mainshaft Washer	32	Trip Bar	55	Body Cover
10	Click Gear	33	Trip Linkage	56	Washer
11	Main shaft	34	Bail Slider	57	Driver Gear
12	Rotor Nut	35	Spring	58	Oscillation Gear
13	Screw	36	Bail Arm Cover	59	Reduction Gear
14	Rotor Set Plate	37	Screw	60	Body Rear Cover
15	Rotor Decorate Ring	38	Rotor Washer	61	Screw(3req.)
16	Screw(3req.)	39	Screw(2req.)	62	Oscillation Guide
17	Line Roller Screw	40	Body Head Cover	63	Clutch Switch
18	Bail Arm	41	Screw(3req.)	64	Oscillation Slider
19	Bearing(2req.)	42	Pinion Cover	65	Screw
20	Line Roller Washer	43	Bearing(3req.)	66	Bearing
21	Line Roller	44	Clutch Spring	67	Body
22	Bushing	45	Bearing Holder	68	Screw
23	Bail Assembly	46	Clutch Assembly	69	Bushing

Ball Bearing 9+1 Gear Ratio 5.8:1

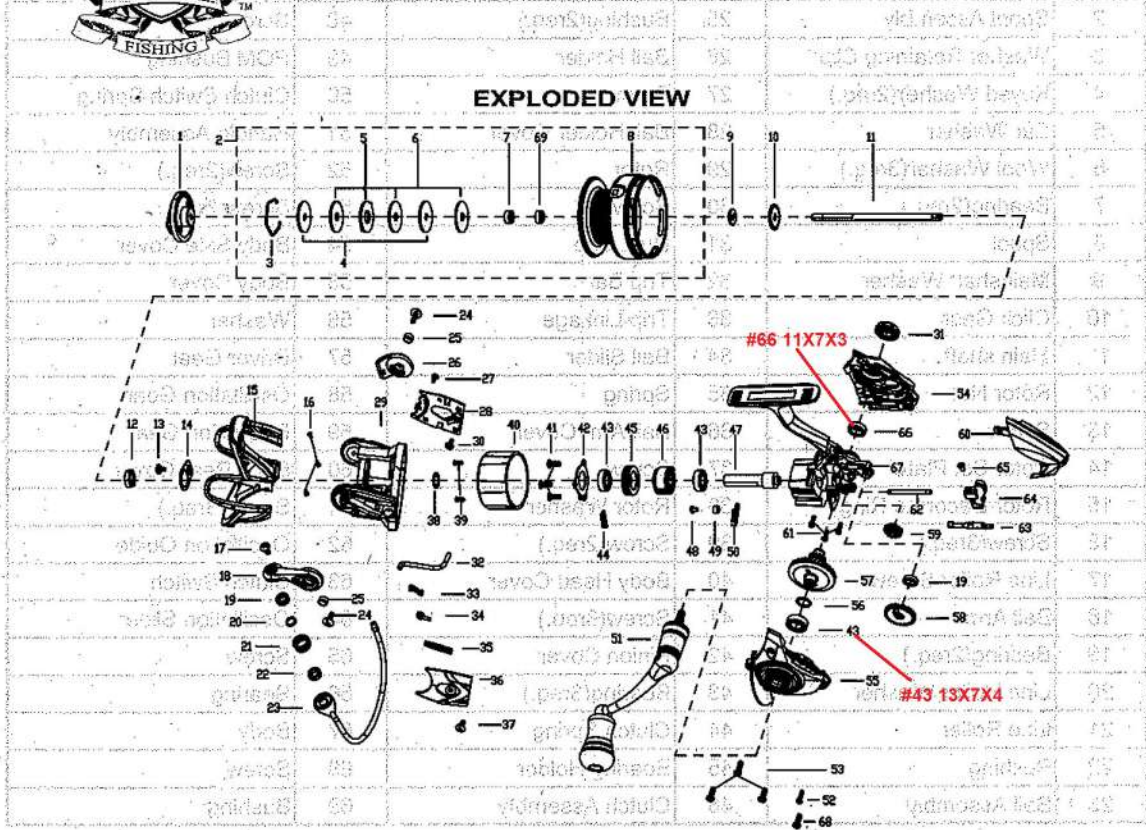
Line Capacity (mm-m/lbs-yds) 0.30-145 0.35-107 / 8-230 11-159

Reel Wt (g) 270

Max Drag (kg) 7



GENESYS 4000



PARTS LIST OF GENESYS 4000

ITEM#	PARTS DESCRIPTION	ITEM#	PARTS DESCRIPTION	ITEM#	PARTS DESCRIPTION
1	Drag Knob Assembly	24	Bail Arm Screw(2req.)	47	Pinion
2	Spool Assembly	25	Bushing(2req.)	48	Screw
3	Washer Retaining Clip	26	Bail Holder	49	POM Bushing
4	Keyed Washer(2req.)	27	Screw	50	Clutch Switch Spring
5	Ear Washer	28	Bail Holder Cover	51	Handle Assembly
6	Wool Washer(3req.)	29	Rotor	52	Screw(2req.)
7	Bearing(2req.)	30	Screw	53	Screw(3req.)
8	Spool	31	Dust Cap	54	Body Side Cover
9	Mainshaft Washer	32	Trip Bar	55	Body Cover
10	Click Gear	33	Trip Linkage	56	Washer
11	Main shaft	34	Bail Slider	57	Driver Gear
12	Rotor Nut	35	Spring	58	Oscillation Gear
13	Screw	36	Bail Arm Cover	59	Reduction Gear
14	Rotor Set Plate	37	Screw	60	Body Rear Cover
15	Rotor Decorate Ring	38	Rotor Washer	61	Screw(3req.)
16	Screw(3req.)	39	Screw(2req.)	62	Oscillation Guide
17	Line Roller Screw	40	Body Head Cover	63	Clutch Switch
18	Bail Arm	41	Screw(3req.)	64	Oscillation Slider
19	Bearing(2req.)	42	Pinion Cover	65	Screw
20	Line Roller Washer	43	Bearing(3req.)	66	Bearing
21	Line Roller	44	Clutch Spring	67	Body
22	Bushing	45	Bearing Holder	68	Screw
23	Bail Assembly	46	Clutch Assembly	69	Bushing

Ball Bearing 9+1 Gear Ratio 5.8:1

Line Capacity (mm-m/lbs-yds) 0.30-175 0.35-128 / 8-282 11-191

Reel wt (g) 270

Max Drag (kg) 9